

International comparison production cost of poultry meat

Peter van Horne

LEI Wageningen UR

Jakarta, September 2015



LEI research Institute



Agricultural Economics Research Institute (LEI)

- Independent Research Institute, NL
- Part of Wageningen University and Research Centre

International comparison production cost poultry meat
update 2013.

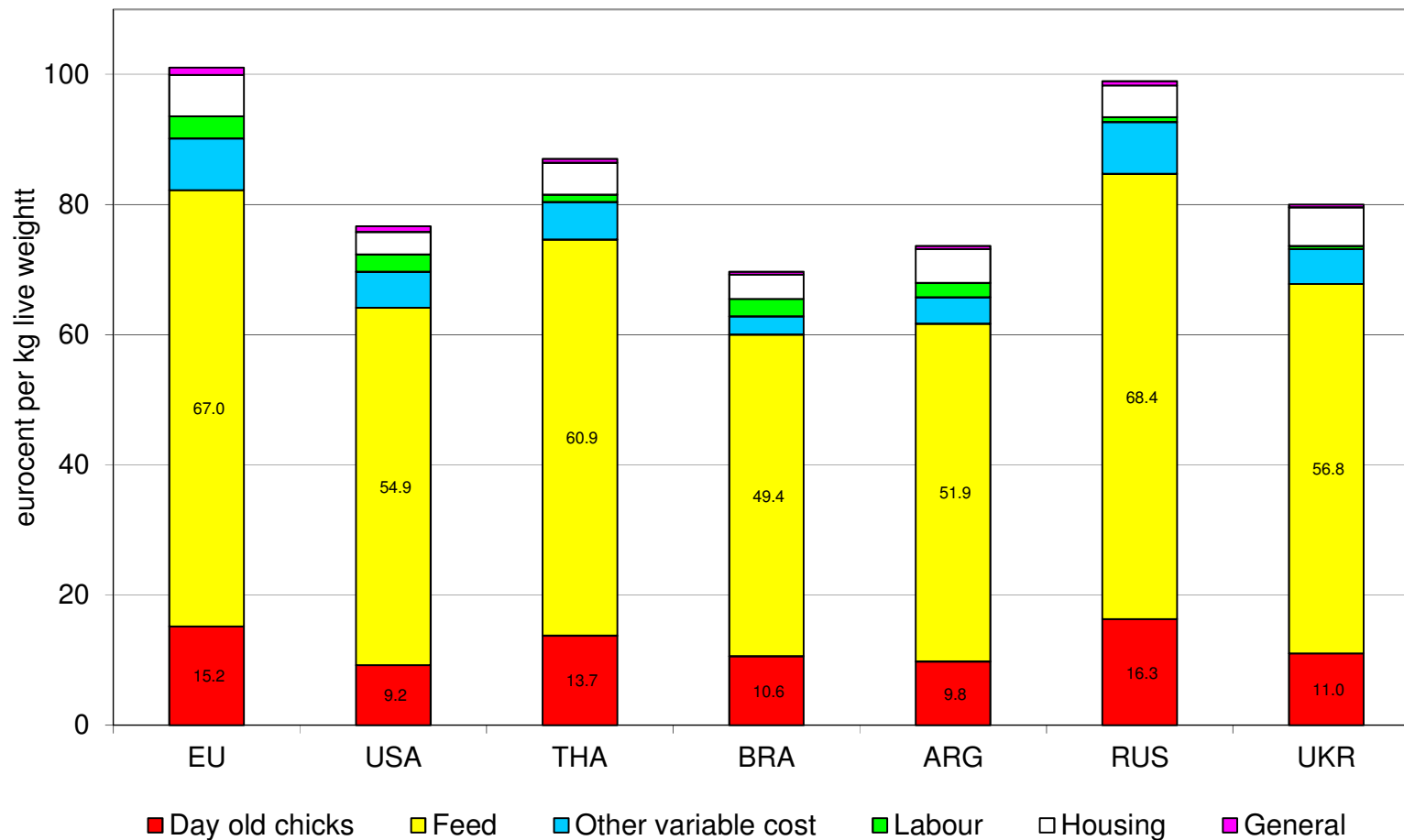


Method production costs broiler meat

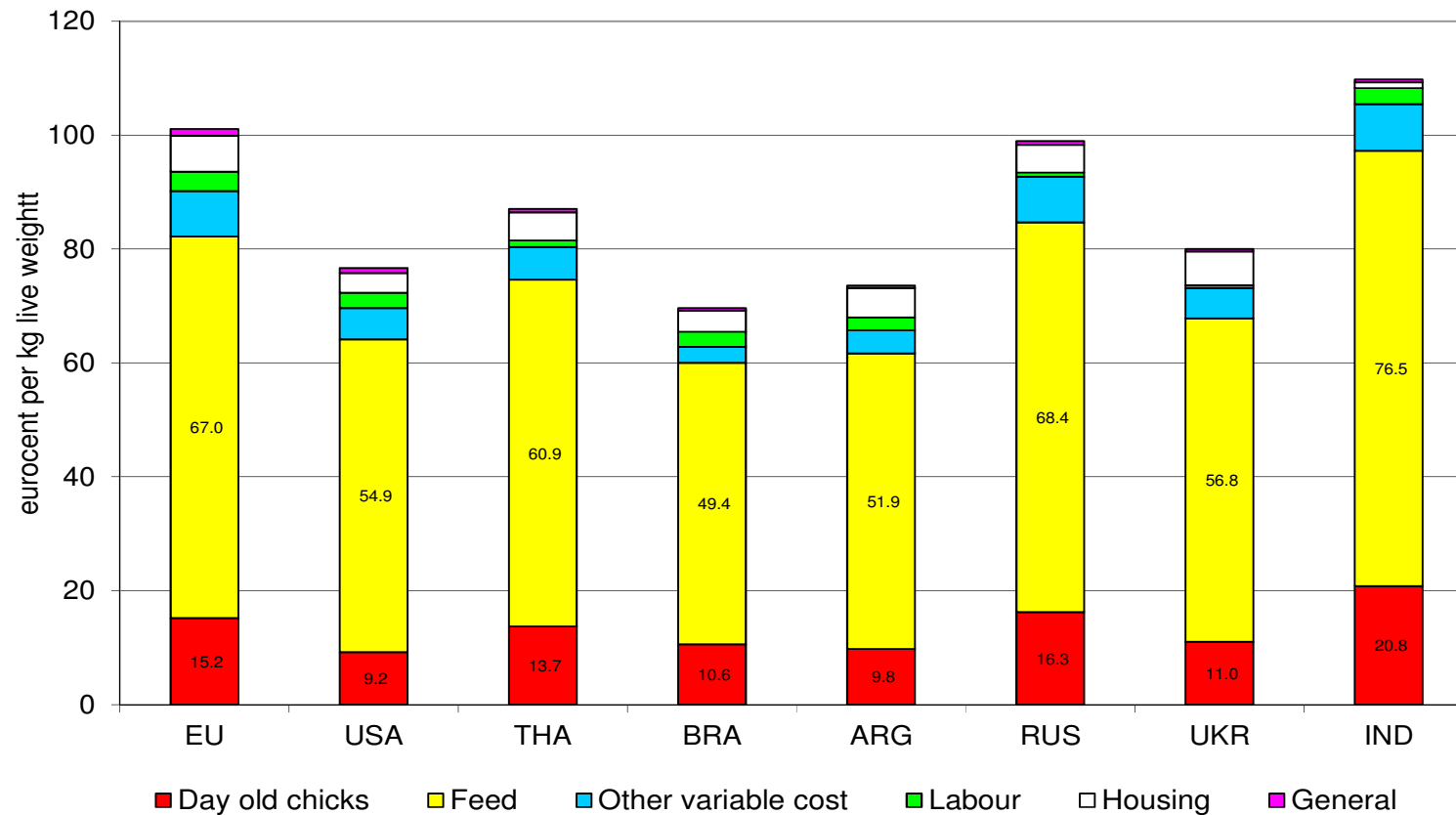
- Collecting basic data on production, 2011 / 2013
- Countries in EU : NL, DE, FR, UK, IT, ES, DK, PL, HU
- Countries non-EU : USA, THA, BRA, ARG, RUS, UKR
- NL calculation method
- Focus on:
 - Primary: feed, doc, housing, labour
 - Processing: plant, equipment, labour
 - Transport cost to market



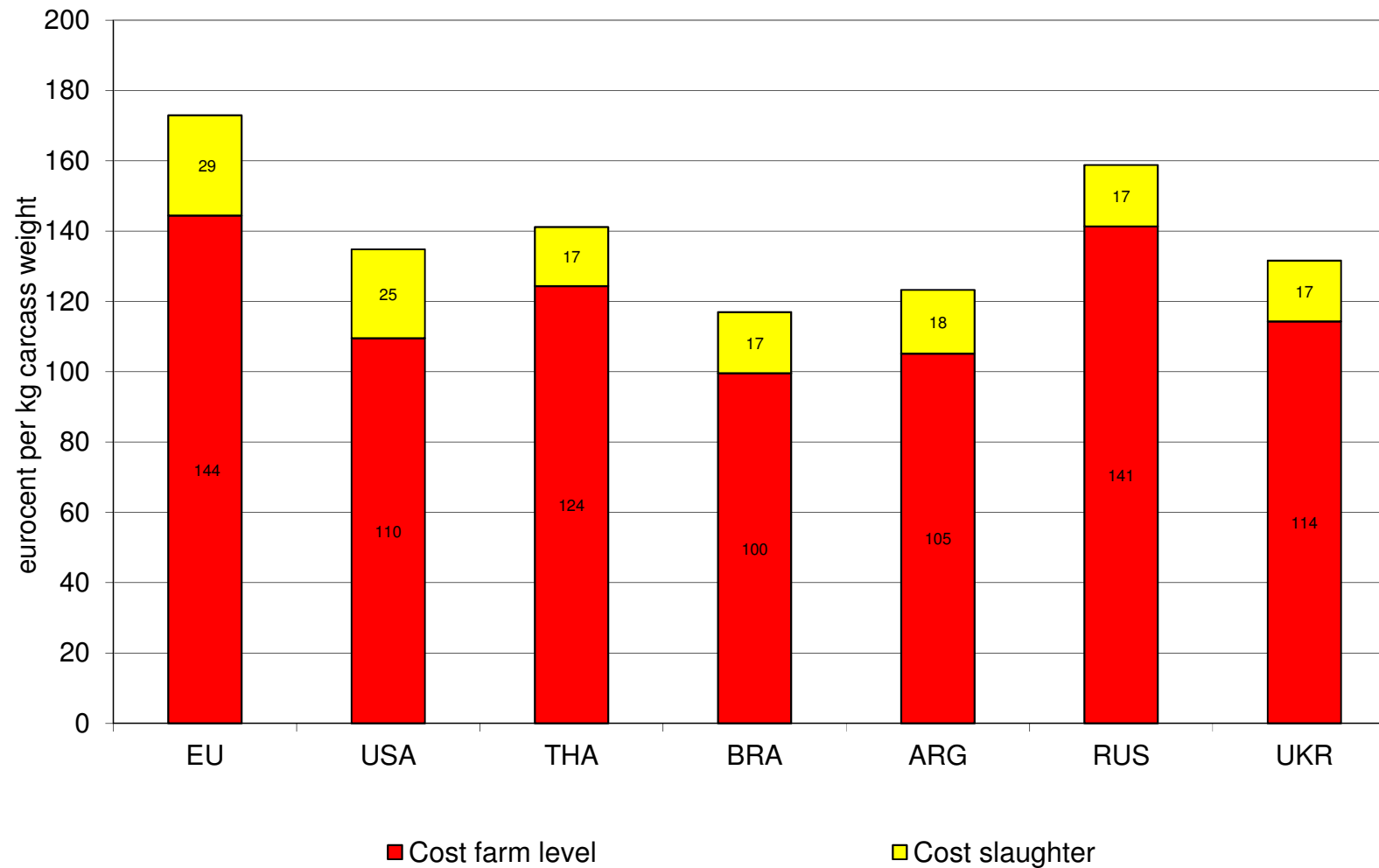
Production costs broilers farm level 2013 (Euro/kg LW) in third countries



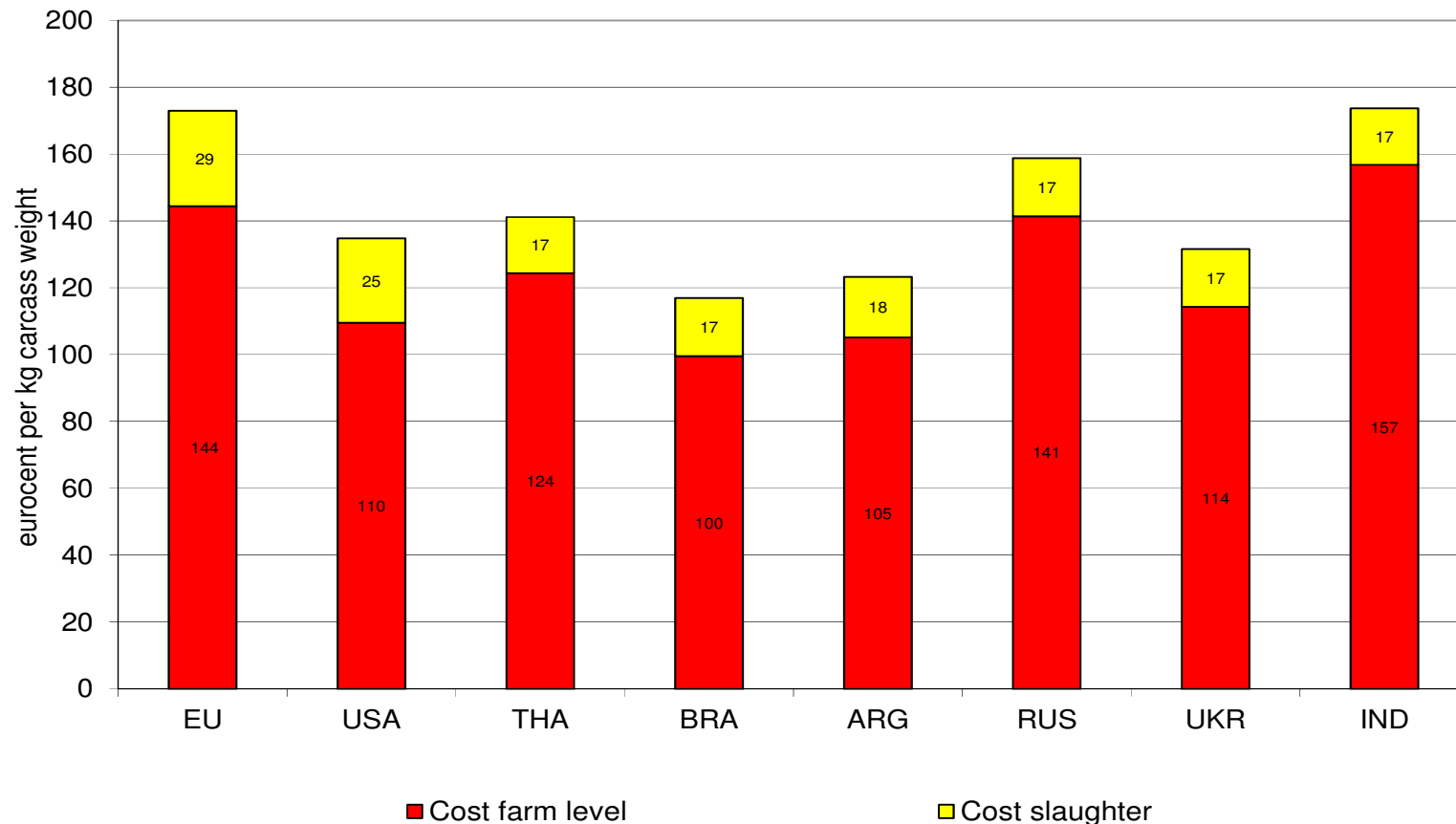
Production costs broilers farm level **2013** (Euro/kg LW) in third countries



Production costs broiler farm and slaughter **2013** (Euro/kg CW) in third countries



Production costs broiler farm and slaughter **2013** (Euro/kg CW) in third countries



Remarks Europe:

- Poultry meat is sold in supermarket as fresh (cooled) product.
- Imports are frozen: towards processing industry (products: nuggets, sate) and food service
- Protection: import quota (max amount) and import levies.
- Exchange rate euro to local currency . Is important factor in trade with US, Brazil and Argentina.

Remarks Indonesia (1)

- Low live weight compared to other countries (with impact on comparison production costs).
- High feed price also compared to all other countries.

Remarks Indonesia (2)

- **Opportunities to reduce costs:**
- Improve performance (lower mortality, lower feed conversion): by better housing conditions and better animal health.
- Higher live weight: for further processing and market quick service restaurants
- Lower feed price: use other ingredients?, government policy? Efficient feed mills, transport (bulk?).

Report is available on the website

Thanks for your attention.

Peter.vanhorne@wur.nl

LEI Wageningen UR

